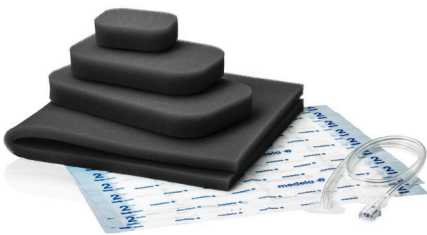


# Invia<sup>®</sup> NPWT Dressings

## THERAPY CONFIDENCE WITH EASE



### Therapy Confidence

- **Intelligent** Pressure Control from the pump to the wound site<sup>1</sup>
- **Dynamic** Exudate Removal helps prevent blockages from the wound site to the pump
- **Secure**<sup>2</sup> tubing attachment with an audible click

### Simplified Management

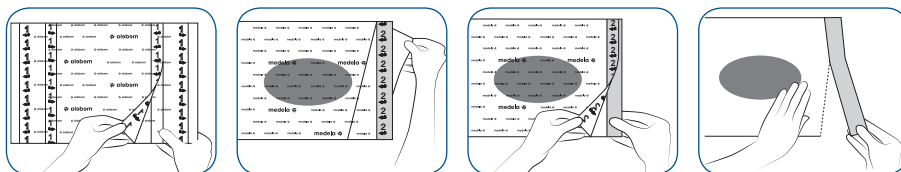
- **Convenient**<sup>2</sup> Quick-connecting tubing interface
- **Intuitive** transparent film handling
- **Easy** dressing application in difficult patient anatomy locations

**Medela provides efficient solutions to support clinicians with Negative Pressure Wound Therapy management in all patient care settings**

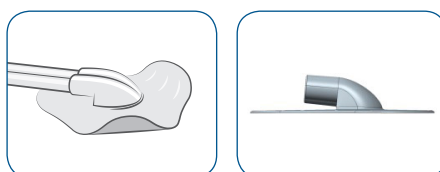
The Invia Dressing Kits with FitPad in conjunction with the Invia Negative Pressure Wound Therapy (NPWT) Systems deliver therapy **confidence by intelligently controlling set pressure** at the wound site<sup>1</sup>. Invia NPWT Systems dynamically adapt the air flow cycle to both volume and viscosity of fluid in the tubing to optimize exudate removal.

**Select** the appropriate dressing **with ease** from our streamlined product offer. The dressing kits share the same transparent film and suction interface components; you only have to select the type of wound filler (foam or gauze) and the appropriate size.

Experience an **established application technique** thanks to the transparent film with intuitive markings.

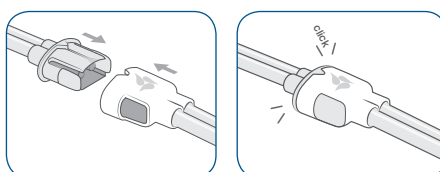


The **low profile design and flexible wings** of the suction interface (Invia FitPad) allow appropriate placement in difficult anatomic locations.



Overall height  
8.5 mm  
Wing thickness  
0.45 mm

The **Quick-connecting** interface between the dressing tubing and canister tubing provides an **easy and secure** attachment<sup>2</sup>.



**Key features at a glance**

- The Invia NPWT System with FitPad provides Intelligent Pressure Control with Dynamic Exudate Removal to help ensure NPWT is reliably delivered and controlled at the wound site
- Easy application of transparent film and external suction interface
- Convenient and secure tubing attachment with the Quick-connector
- Streamlined foam and gauze dressings offer



**Technical data**

<b>Foam</b> Reticulated polyether and polyurethane, hydrophobic material	Pore size: 600–800 microns	<b>Transparent Film</b> Polyurethane film with acrylic adhesive	Size: 26 cm x 32 cm
	Tensile strength: 20 PSI/138 kPa		MVTR: 385 g/m <sup>2</sup> /day
	PSI: Pounds per Square Inch		MVTR: Moisture Vapor Transmission Rate

Invia foam or gauze dressings are intended to be used in conjunction with the Invia Negative Pressure Wound Therapy (NPWT) Systems to deliver negative pressure to the wound.

**Find out more about Medela NPWT Portfolio at [www.medelahealthcare.com](http://www.medelahealthcare.com)**

Medical Vacuum Technology for Healthcare Professionals

**Please contact us or your local Medela representative for details.**

Medela, Invia and Invia FitPad are trademarks of Medela Holding AG, Switzerland.

**Local contact**

Medela AG  
Lättichstrasse 4b  
6341 Baar, Switzerland  
[www.medelahealthcare.com](http://www.medelahealthcare.com)

**United Kingdom**  
Medela UK Ltd.  
Huntsman Drive  
Northbank Industrial Park  
Irlam, Manchester M44 5EG  
United Kingdom  
Phone +44 161 776 0400  
Fax +44 161 776 0444  
[info@medela.co.uk](mailto:info@medela.co.uk)  
[www.medelahealthcare.co.uk](http://www.medelahealthcare.co.uk)

**International Sales**  
Medela AG  
Lättichstrasse 4b  
6341 Baar  
Switzerland  
Phone +41 41 562 51 51  
Fax +41 41 562 51 00  
[customer@medela.ch](mailto:customer@medela.ch)  
[www.medelahealthcare.com](http://www.medelahealthcare.com)

<sup>1</sup> Performance data on file at Medela AG  
<sup>2</sup> Usability Validation data on file at Medela AG

