

Invia[®] Liberty[™] NPWT System

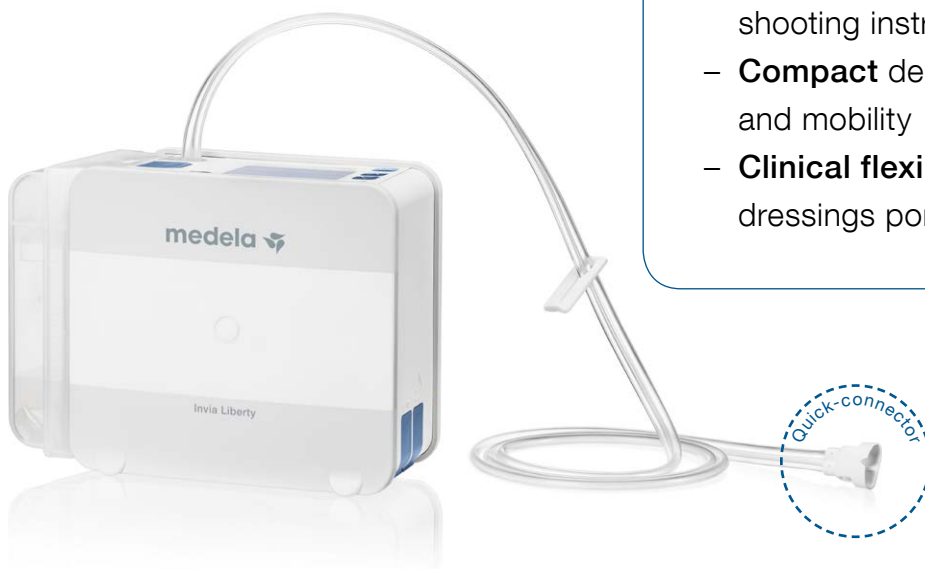
THERAPY CONFIDENCE MADE SIMPLE

Therapy Confidence

- **Intelligent** Pressure Control from the pump to the wound site¹
- Dynamic Exudate Removal helps prevent blockages from the wound site to the pump
- **Secure** canister and tubing connection² with an audible click

Simplified Management

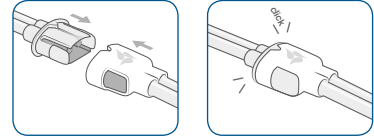
- **Intuitive** pump operation and troubleshooting instructions
- **Compact** design for patient comfort and mobility
- **Clinical flexibility** with comprehensive dressings portfolio



Medela provides efficient solutions to support clinicians with Negative Pressure Wound Therapy management in all patient care settings.

Invia Liberty delivers therapy **confidence by intelligently controlling set pressure at the wound site**¹. The pump dynamically adapts the air flow cycle to both volume and viscosity of fluid in the tubing to optimize exudate removal.

Click-in canister attachment and **one-touch canister release** button allow for easy canister exchange. **Secure tubing attachment** is guaranteed with the new Invia Quick-connector feature².







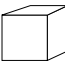
Intuitive and quiet pump operation promotes full integration in the patient's daily life, while **patient comfort and mobility** are facilitated by Invia Liberty's compact design and convenient carrying case.

Key features at a glance

- Intelligent Pressure Control from the pump to the wound site
- Dynamic Exudate Removal actively helps prevent blockages with air flow cycles adapting up to four times a minute
- Pressure options from -40 to -200 mmHg including standard -125 mmHg
- On-screen air leak indicator
- Custom air leak modes for normal and large wounds
- Easy and secure tubing attachment with the Quick-connector
- One-touch canister release button
- Choice of 300 ml and 800 ml disposable canisters with solidifier



Technical data

 - 40 mmHg to -200 mmHg	 > 10 Hours	Modes: Constant and Intermittent Tubing: Double Lumen Tubing, Y-Connector Canister: 300 and 800 ml
 Low flow 5 l/min.	 1 kg 2.2 lbs	 H x W x D 95 x 170 x 150 mm 3.74 x 6.69 x 5.91 inch
		2 year warranty

Find out more about the new Invia Liberty system at www.medelahealthcare.com

¹ Performance data on file at Medela AG
² Usability Validation data on file at Medela AG

Medical Vacuum Technology
for Healthcare Professionals

Please contact us or your local Medela representative for details.

Local contact:

Medela, Invia and Invia FitPad are trademarks of Medela Holding AG, Switzerland.

 Medela AG
Lättichstrasse 4b
6341 Baar, Switzerland
www.medelahealthcare.com

United Kingdom
Medela UK Ltd.
Huntsman Drive
Northbank Industrial Park
Irlam, Manchester M44 5EG
United Kingdom
Phone +44 161 776 0400
Fax +44 161 776 0444
info@medela.co.uk
www.medelahealthcare.co.uk

International Sales
Medela AG
Lättichstrasse 4b
6341 Baar
Switzerland
Phone +41 41 562 51 51
Fax +41 41 562 51 00
customer@medela.ch
www.medelahealthcare.com

